

Jonathan Borgeson

"RITZVILLE HIGH"

RITZVILLE, WASH.

A Handbook and Review

OF

RITZVILLE HIGH SCHOOL

1929-30

Published by
CLASS OF '30

2

"RITZVILLE HIGH"

In Memorium

A Cheerful Worker, a Good Student,
and a Loyal Friend,

RUTH NEUTZMANN

"RITZVILLE HIGH"

3

DEDICATION

We, the members of the Senior Class of '30, wish to dedicate this little handbook, the first of its kind in Ritzville High School, to the new spirit of cooperation, citizenship and good sportsmanship that is every day becoming more apparent in our school.

"FORWORD"

This little book is the first publication of the Ritzville High to appear since the last issue of the old annual, "Wheat," in 1923. It is hoped that the publication of this booklet will be an annual activity in the future. This handbook is published by the Class of '30 as a class project, and is presented for the approval of the students and townspeople with a twofold purpose.

First—to give new students, faculty, and citizens of this school district and outlying regions, a general intimation of the organization of the High School, combined with a short resume of required work, rules, regulations, etc.

Second—to present a permanent record of the activities and accomplishments of the Associated Students in the year of 1929-1930.

CLASS OF '30.

HANDBOOK STAFF

Editor:
DEWAYNE KREAGER

Faculty Advisor:
MISS CHARLOTTE MATHEWS

Organizations Helen Koch
Curriculums Johannah Baumann
School Regulations Mildred E. Harris
Athletics Albert R. Pierce
Society, Dramatics Wanda D. Skinner
History Charles C. Schellenger

Special Writers—Quaife R. Dann, Harry M. Cross, Arthur Kalk-
warf, George Schnurbusch, Charles Dann, Minnie Gaiser.

Typists—Esther Miller, Olga Nauditt, Emma Gust, Rosa Vehrs,
Rose Pflugrath.

SCHOOL SPIRIT AND CITIZENSHIP

By Superintendent E. L. Muzzall

The Ritzville High School is building a school spirit and standard of citizenship that is making it favorably known by surrounding schools. Good school spirit permeates all of the activities of school life. It places the welfare of the group above individual pleasures and notoriety. The good school citizen displays the same qualities that make the good citizen everywhere. Loyalty, honesty, energy, courtesy, responsibility, and the willingness to cooperate with others for the good of all are the traits that mark the successful student and the successful citizen when school days are over. Each of these qualities can be developed by students if real effort is made along the line of greatest need.

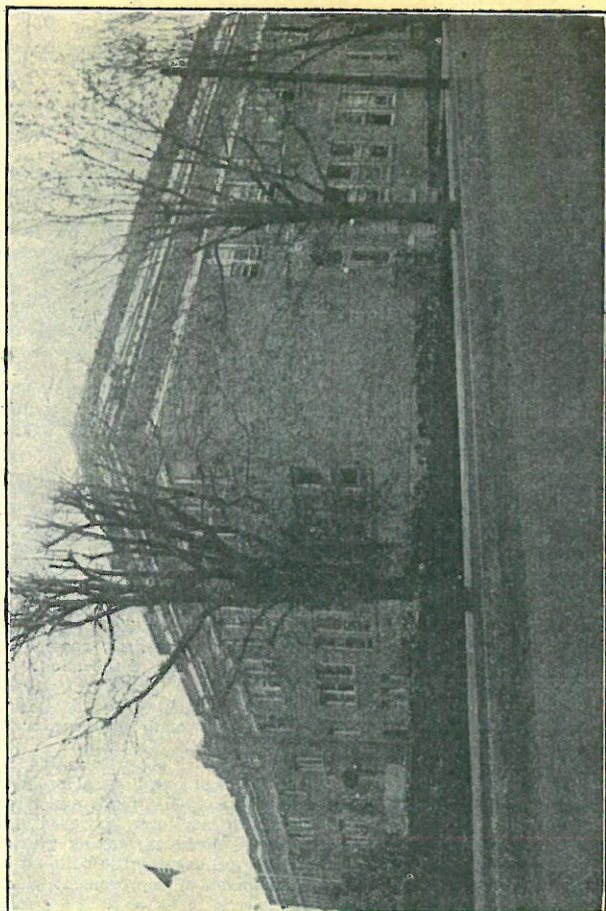
Loyalty means the willingness to support one's school and fellow students when teams are losing as well as when they are winning. It means the supporting of school activities as far as it is possible for one to support them.

Honesty and energy are terms with which we are all familiar and without which one can hope to achieve but little success in either school or later life.

Responsibility and the ability and willingness to co-operate are vital qualities in our present school life as well as in society at large. Responsibility for good care of school property which is loaned us that we may make the best possible preparation for life is but fulfilling our part of a contract. It is frequently stated that the quality of a student body can be determined by the condition of the school building. Paper littered halls, disfigured and untidy walls, and disorderly rooms and study halls tell the visitor more plainly than words of the quality of school citizenship.

Courtesy is a fundamental quality. The student who fails to say "Excuse me," "Thank you," or "Please," on appropriate occasions shows himself lacking in the most elementary essentials of courtesy.

Our school is growing rapidly in size. Let us grow as rapidly in the quality of our school citizenship and school spirit. Real progress is being made in student initiative. Scholarship has made a marked advance this year over last. The study habits have improved and many failures eliminated. Students as a whole are taking greater interest in the activities of the school and are keeping the building in a clean and presentable condition. The amount of improvement which



Ritzville High School

School Spirit and Citizenship.—Continued.

may be made depends upon the leadership within the student body itself and the desire of the student body for high standards of accomplishment. Each of us should wish for our school to be not merely average, but to rank among the best in scholarship, courtesy, and the ability of its graduates to accomplish worthwhile things. The most successful student is he who develops to the greatest possible degree whatever talent he may have no matter how limited.

In the high school at Ironwood, Michigan, a trophy known as the "School Spirit Cup" is awarded annually to the class which has exhibited the best sportsmanship and school spirit. In the Students Handbook, issued by this school, the following are factors relative to school spirit:

(REPRINTED FROM "CITIZENSHIP THROUGH PROBLEMS"—MACMILLAN CO.)

If You Wish To Be Thought Well of In Our High School, Be Loyal To Your School By:

Doing your work as well as you can,
Supporting every varied activity even if you must earn your own money to do so,
Doing nothing which can harm your school's reputation.
Refusing to spread evil, while checking false reports.

Be Courteous:

Refer to teachers and administrators as Miss or Mr.
Thank those who do you a favor.
Ask the pardon of those whom you inconvenience or interrupt.
Give precedence to girls and older people,
Hold the doors open for others.
Never enter an office or speak to a person who is busy until invited to do so.
Remove your hat or cap on entering the building.

Be Considerate:

Make no unnecessary noise, such as shouting, whistling, or walking heavily.
Keep moving instead of blocking passages by stopping to talk.

School Spirit and Citizenship—Continued

Do not wrestle or push one another.

Walk and do not run.

Make no unnecessary work for the janitors by throwing paper or other discarded material in any place other than paper receptacles.

Do not mark on walls or mar any part of the building or equipment.

Remember that this school is loaned to us by the citizens of Ritzville community and we owe it to coming students to hand it on to them as fine as we found it.

Be Respectful:

The Golden Rule is a good guide—Others will act toward and think of you as you act toward them.

It is recommended that each pupil review his own school conduct by comparing it with suggestions offered in the above list of good practises.

FACULTY

ERNEST L. MUZZALL, Superintendent, Ritzville, Washington—
BA, MA, Washington State College, Stanford University.

Senior High:

CHARLES M. ACTOR, Principal, Starbuck, Washington—
BS, Whitman College, Washington State College.
Social Science, History.

EVA MAY CHRISTIE, Bellingham, Washington—
BS, Washington State College.
Physics, Chemistry, Algebra.

JEAN M. HAGERTY, Ritzville, Washington—
BA, University of Washington, University of Maine, Grenoble University.
German, History, Com. Law.

WHITNEY J. KENNY, Spokane, Washington—
BA, Washington State College.
Commercial.

High School Faculty—1929-30

**Faculty—Continued**

VIVIAN E. KILLIN, Spokane, Washington—
BA, Washington State College, Cheney Normal.
Latin, Dramatics, English, Jr. Class Advisor.

CHARLOTTE MATHEWS, Pullman, Washington—
BA, Washington State College.
English, Senior Class Advisor.

DORIS PHILIPS, Marshfield, Oregon—
BS, Oregon State College.
Home Economics, Sophomore Class Advisor.

KATHRYN A. ZEEB, Seattle Washington—
BS, University of Washington.
Biology, Mathematics.

Supervisors:

FLORENCE M. CURRIE, Vancouver, Washington—
BA, Washington State College.
Supervisor of Music.

GERALD G. EXLEY, Colville, Washington—
BA, Washington State College.
Supervisor of Physical Education.

Junior High:

MRS. MARY C. PIERCE, Ritzville, Washington, Principal of
Junior High School.
Cheney State Normal, Lewiston Normal School.
Arts and Crafts, Literature.

ESSEL DRUSCHEL, New Castle, Pennsylvania—
Pennsylvania State College, Cheney State Normal.
History, Geography, English.

FLOYD L. FLEMING, Valleyford, Washington—
Cheney State Normal, Spokane University.
Manual Arts, General Science, Algebra.

HENRY PRAETORIOUS, Odessa, Washington—
Cheney State Normal.
Mathematics, English.

FRED RITCHIE, Alameda, California—
Cheney State Normal, New York State School of Agriculture.
English, Social Science.

HISTORY OF RITZVILLE PUBLIC SCHOOL

The year 1881 witnessed a vast amount of deserved pride on the part of the people of Ritzville when they possessed the first school in Adams or Lincoln county. The school house although far from being elaborate or pretentious and hardly what we would term comfortable was at that time considered very adequate. It was a one-roomed, unpainted building that sheltered livestock on a ranch near what is now known as Paha. The furnishings consisted of one cast-iron stove raised from the floor by a pile of bricks under each corner. There were two crude tables with a rough bench on each side. The teacher was an exalted personage and had a stiff-backed chair and a separate table. Two small windows did not admit a very strong light so at times the building seemed rather dark and gloomy.

The first teacher was Mrs. Roxanna White, now residing in McMinnville, Oregon. She had many obstacles to overcome. Along with a none too warm building she had to contend with lack of writing materials as well as books and other necessary items which the county did not furnish. One of the most prized possessions was a little blackboard. Mrs. Bennet of Ritzville now has this in her possession as a keepsake.

The children that enrolled the first year were: Jesse, Claude, Nora and Laura Harris, Lester, Arthur and Ernest Keller, and Bessie and Clara McKay. The first four years passed swiftly for both students and teacher, and in the year 1885, Ritzville experiencing a period of extraordinary prosperity, built a new school house of two rooms, containing separate desks for the pupils. A public dance was given in the school house in honor of the occasion and the people showed their appreciation by turning out en masse, many of them driving as far as sixty miles, consuming a whole day for a one way trip. Before the gathering broke up a committee "passed the hat" and collected sufficient funds to buy a brass bell for use in the school house. This bell may still be seen at the Lincoln school, where it is carefully guarded from damage because it signified the opening of a new educational era.

The first teacher in the new building was a man by the name of Grant Tuttle. He made it known through letters to local people that he considered this to be quite a distinction, which, in fact, it was.

From 1885 to 1905 the same building served for a school and

History of Ritzville Public School—Continued

the school itself simply experienced the usual "ups and downs" of a usual and quiet decade.

January the fifth, 1905, was the opening date of the Lincoln grade school. This building was of brick and had all of the latest improved school equipment procurable at that time. A little less than a month later, February the third, to be exact, was indeed a gala day for Ritzville, for it was the inaugural day of the Central High School, the last word in construction and modern conveniences. People attended from all surrounding counties to congratulate Ritzville on their school, and to gather ideas for schools of their own.

Many prominent citizens favored the public with addresses, among whom were Professor Henry M. Schafer of Cheney Normal, who delivered the inaugural speech. He was followed by County Superintendent William J. Lansing, who talked on Ritzville's educational future and Professor Casey, who brought the financial side to light and conclusively pointed out where the high school would pay for itself in dollars and cents as well as educational benefit. The talk proved very comforting to some of the more conservative as the building and equipment had cost more than twenty-five thousand dollars.

The next time that Ritzville appeared in the spotlight because of its progressive school system was in the year 1910. On this occasion the high school building was built on College Hill, where it, along with its additions, now stands. This was even better than the Central School, which was now converted into a grade school. The new building had the latest type furniture and lighting system along with a furnace that furnished heat for the whole building, whereas individual stoves for each room had formerly been employed.

In the spring of 1927 work was started on two new wings to be attached to the original building. These were finished late in the fall of '27. The high school now boasted one of the finest and most modern buildings among the 400 class in the state of Washington. Spacious lawns had been planted all around the building and cement walks were laid to all entrances. Showers had been installed as well as a new oil burning furnace that could keep the building thoroughly warm. A junior and senior high school was formed with separate assemblies for each group. A larger and more elaborate auditorium had been built and the interior decorations and equipment were in proportion. An expensive grand piano was added to the stage equip-

History of Ritzville Public School—Continued

ment, as well as new draperies, curtains, footlights and stage mechanism. A projection room for spotlights and perhaps motion picture machines had also been built in the rear of the auditorium.

An improved bell signal system had been installed with a buzzer in each room. Minor improvements have been added from year to year until this year under the supervision of Mr. Actor and Mr. Muzzall, two new tennis courts are being built as well as a new athletic field, under the direction of Gerald Exley. They will be well equipped with running water and other conveniences and when they are completed Ritzville will have one of the most effective institutions in the state. Ritzville may well be proud of her High School, which has been made possible through the whole hearted support of the people of Ritzville and surrounding territory.

With a steadily growing population Ritzville may well look forward to even greater things along educational lines than have already been achieved.

TRADITIONS

Probably the oldest traditions of the school are the Junior-Senior Banquet and the Alumni Banquet.

The Juniors honor the Seniors with a banquet near the end of the year which is the climax of the class' career.

Immediately after graduation the new alumni are welcomed to the ranks by the older graduates in a colorful banquet. This is usually considered the conclusion of the students' high school life.

"The Senior Sneak" has been somewhat modified in that it has become a Senior Picnic. A day is set aside in the spring and the renowned Seniors spend the day somewhere in the vicinity.

The Juniors and Sophomores are blessed with a similar occasion at approximately the same time.

A custom that has been successfully renewed this year is the Football Banquet. The sophomores honor the football players in the outstanding event of the fall. It is hoped that this will continue to be a Sophomore project.

This handbook renews the custom of a yearly publication in

Traditions—Continued

R. H. S. In former years the publication was an annual, entitled, "Wheat."

The Seniors' individual occasion, "Class Day," has been discontinued in favor of "Class Night," in order to allow more of the people who are interested to witness it.

Every Senior takes part in the program of Class Night, either in the one-act plays, musical productions, or class prophecy and will. It is believed that this new Senior feature proves much more popular than the activities which have formerly taken place during the day in assembly.

SCHOOL BOARD

J. E. L. OLSON, Chairman
L. D. EMERSON
D. A. SCOTT
CARRIE B. SCHRAGG, Clerk

ASSOCIATED STUDENTS

STUDENT BODY

OFFICERS

President Quaife R. Dann
Vice President Alma Scott
Secretary-Treasurer Raymond Emerson

The Associated Students of Ritzville High School are governed by the above named officers, and the Student Council under the official revised constitution to be found in another section of this handbook.

During the past year a new constitution was formed to take the place of the old one which had become obsolete. Furthermore, numerous student activities, all for the general welfare of the students, have been accomplished.

THE STUDENT COUNCIL

The Student Council is an organization of students for the enforcement of student body government. It consists of the Student Body officers, president and secretary of each class, the Athletic Manager, Athletic Captain and a member at large from each class.

Membership at present includes:

Seniors: Quaife R. Dann, Dewayne Kreager, Goodrich Reese, Arthur R. Howey, Rudolph Rogel, Harry Cross and Arthur Kalkwarf.

Juniors: Alma Scott, Raymond Emerson, Mary Hille, Charles Dann.

Sophomores: Loren McCollom, Rosemary Bauer, Chris. Helmbigner.

Under the new constitution, next year's Student Council will be composed in the same manner as listed above, except that the president of the "R" Club, and the president of the Girls' League will take the places now held by the Athletic Manager and Captain.

Powers and duties of the Student Council appear in the constitution.



Senior Class 1930

SENIORS

CLASS OFFICERS:

President	Dewayne Kreager
Vice President	Gray W. Pankey
Secretary-Treasurer	Goodrich Reese
Class Advisor	Miss Charlotte Mathews

HISTORY OF CLASS OF '30

Away back in September of 1918 five of the members of the present Senior Class entered the schools of Ritzville for the first time. These five alone remained in the schools of Ritzville for twelve years—and today, twelve years later, they remain the only charter members of the class of '30.

As time went on members departed and new students arrived to take their places. The change was constant and at one time the class numbered over seventy scholars. Today as Seniors the same class will graduate forty-eight members, the largest class in the history of the Ritzville High School.

Their record has not been much to startle the world—but it is one to which they can point with pride as being constantly towards the betterment of our High School.

The Freshman year was spent as Junior High Seniors in the old Central Building. While Freshmen they claim the honor of presenting the first organized school paper section in the history of Ritzville schools. Two of their members organized the old "Junior High Dust Pan" in the fall of 1926 and thus presented a new idea to the citizens of Ritzville in the matter of school news sections. The present "Harvester" is the ultimate outcome.

As Sophomores they entered the Senior High School. The first few months were somewhat hectic due to the fact that new wings of the building were still to be completed. The class of '30 was the last to be initiated into the school in the customary manner, the idea of initiation having since gone into discard.

History of Class of '30—Continued

Upon ascending to the position of Juniors they began to claim their place of distinction in the activities of the High School. The first Junior Play was accomplished by the class that year. "Adam and Eva" proved to be a successful presentation both on the stage and in the matter of finances. The proceeds went into the annual Junior-Senior Banquet—an affair that proved to be enjoyable in every way.

September of 1929 saw forty-nine faces—mostly old—some new—asssembled in the customary Senior section of the assembly. Immediate results from Senior activities became apparent. A high class record in scholastic standings has been set up by the class for the year—as proven by an almost constant "B" average for the class. The class of '30 can claim many achievements as Seniors: The first class to undertake the publication of an official High School booklet since the demise of "Wheat" in 1923; the first class to discard the idea of class dues; the first class to change from the old impromptu Class Day exercises to a more formal Class Night performance. A majority membership in the Student Council is held by the Seniors. The formation of a new constitution for years to come is largely due to the class of '30. "The Goose Hangs High" was selected as the annual Senior Class Play.

In athletics they can also claim prominence with letterwinners in various sports being listed as members of the Senior Class.

As the high school career of the Class of '30 comes to a close—the members will be able to claim with pride a true record of achievements—and look forward to the future with a feeling of satisfaction for their past accomplishments.

SENIOR CLASS ROLL

ARLT, HARRY	General
Glee Club 2, Operetta 2.	
BALDWIN, GLENN	General
Glee Club, 2, 3; Operetta 2, 3; Baseball 2, 3, 4.	
BAUER, EDWARD	Scientific
Glee Club 2; Operetta 2.	

Senior Class Roll—Continued

BAUMAN, JOHANNA	Commercial
Glee Club 2, 4; Operetta 2; Girls' League 4; Handbook Staff 4.	
BAZILLE, ALICE L.	General
Glee Club 2; Operetta 2; Girls' League 4.	
CRAWLEY, LESTER	General
Orchestra 4; Operetta 4; Glee Club 4.	
CRONRATH, RAYMOND A.	Scientific
Football 4; "R" Club 4.	
CROSS, HARRY M.	Classical
Valedictorian; Athletic Manager 3; Football Manager 4; Basketball 4; Junior Class Play 3; Senior Class Play 4; Debate 4; Student Council; Sec. Treas. Student Body 3; Sec-Treas. Class 2; Orchestra 2, 3; Latin Club 3.	
DANN, CHARLES R.	General
Operetta 2, 3; Glee Club 2, 3; Junior Class Play 3; Student Council; Sec-Treas. Class 3; Latin Club 2. (Three Year Graduate).	
DANN, QUAFIE R.	Scientific
Student Body President 4; Class President 3; Student Council; Operetta 2, 3, 4; Glee Club 2, 4; Harvester Staff 3, 4; Editor, 2nd Semester 3; Delegate W. S. C. Student Convention 3; Orchestra 4; Pep Band 4; Scribbler's Club 4; Junior Class Play 3; Senior Class Play 4; Football 3.	
DENCE, JOAN E.	Classical
Harvester Staff 4; Scribbler's Club 4; Vice-Pres. Girls' League 4; Class Play 4.	
FREISE, EVELYN	General
Girls' League 4; Cafeteria 4.	
GAISER, MINNIE	General
Operetta 4; Glee Club 4; Girls' League 4.	
GUST, EMMA	Commercial
Glee Club 2, 4; Girls' League 4.	
HARRIS, MILDRED E.	Classical
Handbook Staff 4; Girls' League 4; Harvester Staff 4; Editor First Semester 4; Latin Club 3; Scribbler's Club 4; Junior Class Play 3; Senior Class Play 4; Operetta 4.	

Senior Class Roll—Continued

HOEFEL, EDNA	Commercial
Glee Club 2; Scribblers' Club 4; Harvester Staff 4; Girls' League 4; Senior Class Play 4; Class Play Staff 3.	
HOLLENSHEAD, LOLA	General
Glee Club 4; Operetta 4; Girls' League 4; Senior Class Play 4.	
HOWEY, ARTHUR R.	Scientific
Football 2, 3, 4; "R" Club 3, 4; Track 2, 3, 4; President "R" Club 4; Basketball 2, 3; Student Council; Vice Pres. Class 3.	
JANTZ, MARTHA	General
Girls' League 4.	
KALKWARF, ARTHUR W.	Scientific-Classical
Operetta 2, 3, 4; Glee Club 2, 3; Junior Class Play 3; Baseball 2, 3; Student Council; Football 4; "R" Club 4.	
KANZLER, GLORIA	Commercial
Glee Club 4; Operetta 4; Junior Class Play 3; Girls' League 4; Senior Class Play 4.	
KOCH, FRIEDA	Commercial
Scribblers' Club 4; Girls' League 4; Cafeteria 4.	
KOCH, HELEN	General
Harvester Staff 4; Editor 2nd Semester 4; Scribblers' Club 4; Glee Club 2; Operetta 2; Junior Class Play 3; Senior Class Play 4; Debate 4; Handbook Staff 4; Girls' League 4; Delegate W. S. C. Student Convention 4.	
KREAGER, DEWAYNE	Scientific-Classical
Senior Class President 4; Salutatorian; Student Council; Football 3, 4; Baseball 2, 3; "R" Club 3, 4; Harvester Staff 4; Editor Handbook 4; Scribblers' Club 4; Latin Club 3; Junior Class Play 3; Senior Class Play 4; Pep Band 4; Operetta Manager 3, 4; Sec.-Treas. Class 3; Delegate to W. S. C. Student Convention 4.	
KRUEGER, JEAN	General
Track 3; Football 4.	
LEONARD, HOWARD	General
Senior Class Play 4; Football 4.	
MURRAY, ANNA	General
Glee Club 2, 3, 4; Girls' League 4; Operetta 3.	

Senior Class Roll—Continued

MILLER, ESTHER	Commercial
Girls' League 4; Glee Club 4.	
MILLER, OTTO V.	General
Football 3, 4; "R" Club 3, 4; Operetta 4; Glee Club 4.	
MILLER, THEODORE	General
Football 3, 4.	
NAUDITT, OLGA C.	Commercial
Scribblers' Club President 4; Home Economics Club 4; Girls' League 4; Cafeteria 4; Harvester Staff.	
PANKEY, GRAY W.	General
Football 3, 4; "R" Club 3, 4; Basketball 3; Glee Club 2; Sec.-Treas. "R" Club 4; Vice President Class 4.	
PFLUGRATH, ROSIE	General
Glee Club 4; Cafeteria 4; Girls' League 4.	
PIERCE, ALBERT R.	Scientific
Glee Club 2, 3, 4; Operetta 2, 3, 4; Class Play Manager 3, 4; Football 3, 4; "R" Club 4; Handbook Staff 4; Scribblers' Club 4; Harvester Staff 3, 4; Basketball 3; Pep Band 4.	
REESE, GOODRICH	Scientific-Classical
Junior Class Play 3; Football 4; Basketball 3, 4; "R" Club 4; Student Council; Sec.-Treas. Class 4.	
REIBER, ARTHUR J.	Scientific
Glee Club 2, 3; Operetta 2, 3.	
REIFF, ELSIE	General
Orchestra 3, 4; Pep Band 4; Girls' League 4; Vice President Class 2.	
ROGEL, RUDOLPH	General
Football 3, 4; Basketball 3, 4; "R" Club 3, 4; Baseball 2, 3; Student Council.	
SCHELLENGER, CHARLES	General
Glee Club 3; Operetta 3; Football 3; Harvester Staff 4; Scribblers' Club 4; Senior Class Play 4.	
SCHNURBUSCH, GEORGE	Scientific
Operetta 3, 4; Football 3, 4; "R" Club 4; Latin Club 3; Senior Class Play 4.	

Senior Class Roll—Continued

SCHWISOW, VERA C.	Scientific
Glee Club 2; Operetta 2; Home Economics Club 4; Cafeteria 4; Girls' League 4.	
SKINNER, WANDA D.	General
Girls' League 4; Handbook Staff 4; Scribblers' Club 4; Harvester Staff 4.	
STASER, ROBERT	General
Football 3, 4; "R" Club 3, 4; Glee Club 2, 3; Operetta 2, 3.	
STOOPS, MELVIN G.	General
Football 3, 4; "R" Club 3, 4; Vice President "R" Club 4; Junior Class Play 3; Senior Class Play 4.	
THOM, ALMA	General
Girls' League 4; Cafeteria 4; Glee Club 3, 4; Operetta 3, 4; Class President 2; President Home Economics Club 4.	
THOM, WILMA	Classical
Glee Club 2, 3, 4; Operetta 2, 3, 4; High School Pianist; Orchestra 3, 4; Girls' League 4.	
VEHRS, ROSA L.	General
Glee Club 2; Girls' League 4; Orchestra 4; Pep Band 4.	
WEISE, BERTHA	Classical
Glee Club 3; Latin Club 3; Girls' League 4; Junior Class Play 3; Senior Class Play 4.	

CLASS YELL

One Nine Three O
 Who's it gonna be O
 Watch and see O
 One Nine Three O

JUNIORS

Officers:

President	Alma Scott
Vice President	Raymond Emerson
Secretary-Treasurer	Mary Hille
Class Advisor	Miss Vivian Killin

CLASS ROLL

Girls:

Alma Adler	Clara Koch	Esther Sellars
Alice Arlt	Dena Koch	Clara Sickmann
Irene Barnes	Marjorie Kubie	Edythe Taylor
Gladys Bazille	Ona Luiten	Daisy Taylor
Edna Brown	Anita Nuetzmann	Edna Thiel
Alice Clodius	Doris Proctor	Helen Thompson
Louise Deking	Laura Rieker	Anna Van Buren
Anna Freise	Hazel Schafer	Alice Vehrs
Mary Hille	Ruby Schafer	Mamie Vehrs
Edna Hensel	Alma Scott	Doris Warren
		Hilda Wagner

Boys:

Wayne Anderson	Forrest Haight	Robert Lee
Clarence Bauer	Max Harder	Earl Luiten
Joel Braun	Jake Hilzer	Winton Miller
Theodore Deking	Harold Heinemann	Harold Pfannekuchen
Carlton Dillingham	Elmer Kembel	Ivan Schafer
Raymond Emerson	Richard Kembel	Milton Wolsborn
Alex Hahn	Vincent Imus	

SOPHOMORES

Officers

President	Loren McCollum
Vice President	Charles Kittel
Secretary-Treasurer	Rosemary Bauer
Class Advisor	Miss Doris Philips

CLASS ROLL

Girls:

Lillian Anderson	Genevieve Zinkgraf	Phyllis Schwisow
Rosemary Bauer	Bertha Meyer	Mildred Setterland
Ruby Becker	Emma Miller	Louise Sickmann
Lois Buckland	Evelyn Miller	Thelma Stoops
Ethel Buscher	Naomi Miller	Ruth Telecky
Helen Coffey	Violet Miller	Ora Thiel
Marie Hahn	Ruth Old	Amanda Van Buren
Edell Heinemann	Margie Pierce	Helen Walter
Ethel Imus	Gertie Rehn	Lotus Wilkening
Louisa Kinzel	Milda Rogel	Evelyn Welsandt
Catherine Koch	Mildred Shelly	Gertrude Ivey

Boys:

Clifford Anderson	Paul Hensel	Everett Schafer
Irvin Baumann	Carl Hoffman	Willman Schafer
Raymond Danekas	Kieth Imus	David Schneider
Winston Davis	Walter Jantz	Berthold Stromberger
Edwin Dehnell	Charles Kittel	Raymond Telecky
Alvin Farrier	Kenneth Kulm	Aaron Thiel
Clarence Fleming	Loren McCollum	Daniel Thiel
Robert Fifield	Walter Meyer	Emil Wagner
Edward Haight	Alvin Miller	Harold Wagner
Omar Haight	Albert Pflugrath	Alvin Wilcox
Chris Heimbigner	Leo Schafer	

ATHLETICS IN GENERAL

During the past school year athletics in the Ritzville High School have been reborn, a large percentage of games were lost from the standpoint of scores, but back of it all a new group of efficient players has been developed in each sport. For the accommodation of country students wishing to engage in any of the major sports, an eighth period was provided. Those having study periods the seventh could "turn out" during that time provided their grades were satisfactory. This system brought out many country boys who otherwise would have no chance to engage in any of these worthwhile sports. The country boys would quit practice in time to catch their respective buses.

The graduating class of 1929 took with it approximately ten stellar players leaving about the same number of boys who were prominent in athletics. The loss of these athletes left a big opening for underclassmen during the season of 1929-30. Many of these boys who went to higher schools saw action as frosh players. A majority of the boys who reported for the different sports had never played in a game before and few had ever seen a game.

FOOTBALL

The football season opened with forty candidates on the field of which number twelve were seniors and only six were letter men. During the season three full teams were developed and second team games gave the less experienced a chance to play. A busy schedule was completed by the first string. Many of the newcomers were novices at the game and with the help of the coach and some of the veterans showed up well toward the last of the season. The varsity string was light, the line averaging 145 pounds and the backfield about 155. About one half of the starting lineup were seniors who had understudies on the second teams. During the season the team was defeated time and again but climaxed the season with three wins in four days, all out of town games. The student spirit behind the team was the best in years.

The football team will lose fourteen players by graduation leaving a majority of sophomores around which to build for the coming season.

Football—Continued

The schedule for the past season:

Sept. 20	Harrington (here)	13-0
Sept. 27	Odessa (there)	7-0
Oct. 4	Cheney (there)	6-0
Oct. 11	Cheney "Papooses" (here)	14-0
Oct. 18	Kennewick (there)	6-0
Oct. 25	Davenport (there)	13-0
Nov. 1	Pasco (here)	25-0
Nov. 8	Kahlotus (there)	0-19
Nov. 9	Washtucna (there)	0-13
Nov. 11	Rosalia (there)	0-6

Two second team games were played:

Sept. 28	Ephrata (here)	18-12
Oct. 6	Washtucna (there)	0-13

BASKETBALL

Each year the basketball season is started off by a series of interclass games which each year bring out new players to be developed. The Senior team won the tourney this year after a close run with the Sophomores. A sportsmanship trophy is also awarded to the deserving class.

Of the twelve boys who played basketball last year, seven were graduated. This again left a wide gap to be filled by new material. Of the basketball squad of twelve boys during the season two were Seniors, four were Juniors and six Sophomores. All but one of these boys had had basketball experience but had seen little action in varsity high school games the previous year when the team was busy piling up scores on visitors.

The first few games of the season were poorly played by the boys, who averaged in size much lighter than their opponents. Coach Exley drilled them effectively on floor-work, much of which

Basketball—Continued

was patterned after college tactics, and the boys showed steady improvement through the season. After winning the county conference they were eliminated in the sub-district tourney held here.

An understudy team was developed that showed up well when substituted in place of the first string men, and played several out of town teams. Eleven men were awarded letters at the close of the season.

The scores for the season:

Ritzville, 14	Steptoe, 26	Ritzville, 16	Cheney, 19
Ritzville, 12	Odessa, 17	Ritzville, 7	Cheney, 23
Ritzville, 13	La Crosse, 31	Ritzville, 17	Washtucna, 9
Ritzville, 14	Odessa, 11	Ritzville, 18	Pasco, 14
Ritzville, 4	Alumni, 36	Ritzville, 21	Kahlotus, 13
Ritzville, 16	Washtucna, 18	Ritzville, 25	Lind, 20
Ritzville, 17	Harrington, 10	Ritzville, 29	Spangle, 40
Ritzville, 21	Pasco, 24	Ritzville, 29	Kahlotus, 5
Ritzville, 25	Lind, 12	Ritzville, 15	Washtucna, 18
Ritzville, 14	Cheney, 16	Ritzville, 7	Walla Walla, 42
Ritzville, 12	Spangle, 26		

PHYSICAL EDUCATION

All physically fit students of the school who do not participate in any recognized major sport during the year are required to attend two gym classes each week for the purpose of physical development.

Boys' classes are conducted Monday and Wednesday and girls' classes Tuesday and Thursday, the classes lasting for forty-five minutes. One fourth credit is allowed each student for each year's work in the gym.

The neophytes are given intensive drill in regular army style, marching, fundamental and advanced tumbling, wrestling, boxing, baseball, basketball and group dancing for the girls.

Several times during the year members of the classes have performed for the amusement of students' weekly assemblies. Besides

Physical Education—Continued

building up athletically inclined students who will boost high school athletics, these classes help to develop the participants both physically and mentally and tend to correct slow, awkward movement and thinking.

SUB-DISTRICT TOURNEY

February 21-22 a sub-district tournament was held in Ritzville for the purpose of selecting two teams to compete in Pullman in a district meet the following week-end. Walla Walla, Prescott, Wash-tucna and Ritzville competed and out of these teams competing, Walla Walla and Prescott won first and second places, respectively.

This is the second time Ritzville has sponsored this tournament and both times made it pay financially although the first year's receipts greatly passed the mark set this year.

TENNIS

During April the new tennis courts in the rear of the High School building took shape and many eager students took advantage of them. This is the first year of tennis since the new additions to the old building were made two years ago.

Formerly county tennis tournaments were held and it is hoped that a new tournament schedule can be developed this spring.

All work done in developing the courts was done by students in the high school and much of the material was left after tearing down the old courts.

Nearness to the high school, city park and swimming pool will make the courts a favorite mecca for tennis players during the summer months.

DEBATE

The purpose of debate is to give its participants practice in appearing before the public, to learn the art of quick thinking and also the art of expressing themselves while speaking before an audience.

The question this year was, "Resolved, that intercollegiate and interscholastic athletics are detrimental."

The members of the team were: Alma Scott, Helen Koch and Harry Cross.

The schedule for the year was as follows:

North Central at Ritzville.

Hillyard at Hillyard.

Lewis and Clark at Ritzville.

Odessa at Ritzville.

There was a decided improvement in the team towards the last of the season. The first two debates resulted in close decision for the opposing sides, however, the Ritzville team won the last two encounters.

The team was coached by Mr. J. M. Hagerty.

GIRLS' LEAGUE

This organization, formed during the second semester of the school year 1929-1930, has been responsible for the development of cooperation among the girls in the Senior High School.

The first large project which was undertaken was the re-decorating and furnishing of a rest room to be used by all the girls in the League. Money for this was raised by various baked food and candy sales. Each class was responsible for a particular sale, bringing into effect a competitive atmosphere which naturally created more interest.

The organization, although in its infancy, will no doubt prove beneficial into bringing into closer contact all the girls in the Senior High School.

ORGANIZATIONS

"RED R CLUB"

President Arthur R. Howey
Vice President Melvin G. Stoops
Secretary-Treasurer Gray W. Pankey

The Red "R" Club is an organization of all athletic players who have achieved their letter or athletic award in their respective sport. It is composed of all students who wear the "R" for athletic achievement.

The Club has charge of athletic contests, the upkeep of the playfield, and general student discipline throughout the school.

During the past year the development of the new playfield has been one of their greatest achievements.

The following are members:

2nd Year Members	Staser, Robert
Anderson, Wayne	Stoops, Melvin
Bauer, Clarence	
Danekas, Raymond	
Hahn, Alex	
Howey, Arthur	
Kemble, Elmer	
Kemble, Richard	
Kittel, Charles	
Kreager, Dewayne	
Lee, Robert	
Miller, Otto	
Pankey, Gray	
Pfannekuchen, Harold	
Rogel, Rudolph	

1st Year Members

Cronrath, Raymond
Emerson, Raymond
Heimbigner, Chris
Heinemann, Harold
Kalkwarf, Arthur
McCollum, Loren
Pierce, Albert R.
Reese, Goodrich
Schafer, Wilman
Schnurbusch, George
Stromberger, Berthold

Girls' League—Continued

Miss Eva Christie is the faculty advisor. The following students are the officers:

President Alma Scott
Vice President Joan Dence
Secretary and Treasurer Helen Koch
Reporter Marjorie Pierce

LATIN CLUB

The name of the Latin Club is, "Socii Romani."

Purpose: To increase interest in Latin and its effects upon our civilization; to establish friendly relations between students and teacher.

The officers during the year were:

President Martha Neutzmann
Vice President Thelma Stoops
Secretary and Treasurer Mildred Womach

Members:

Lois Buckland	Violet Schmidt
Dorthea Kembel	Hannah Schoessler
Evelyn Krause	Mary Schoessler
Bertha Meisner	Virgil Treadwell
Bob Miller	Genevieve Zinkgraf
Myra Miller	Mildred Womach
Martha Nuetzman	Thelma Stoops
Gerald Pence	Phyllis Schwisow
Geraldine Pence	Evelyn Welsandt
Orlinda Rogel	Ethel Imus

"THE HARVESTER"

The Ritzville High School student newspaper is "The Harvester," conducted during the past year as a department in the Ritzville Journal-Times, through the courtesy of the editor thereof. The paper makes its appearance each week.

It is hoped that "The Harvester" may soon become a separate publication.

The staff of "The Harvester" during the first semester of the year was as follows:

Editor Mildred Harris
 Assistant Editor Helen Koch
 Sports Editor Bert Pierce
 Society Editor Clara Sickmann
 Exchange Editor Edna Hoefel
 Associate Editors—Marjorie Pierce, Louise Sickmann and Olga Nauditt.

Special Writers—Joan Dence, Dewayne Kreager and Quaipe Dann.

The Staff during the last semester was:

Editor Helen Koch
 Assistant Editor Wanda Skinner
 Society Editor Daisy Taylor
 Sports Editor Bert Pierce
 Exchange Editor Mildred Harris

Associate Editors and Special Writers—Esther Sellars, Dewayne Kreager, Clara Koch, Clara Sickmann, Olga Nauditt, Charles Schellenger and Joan Dence.

The faculty advisor is Miss Charlotte Mathews.

SCRIBBLERS' CLUB

The membership of the Scribblers' Club is made up entirely of "The Harvester" Staff from the Senior High. The main object of this club is to afford an outlet for the literary aspirations of its

Scribblers' Club—Continued

members, and to keep the townspeople informed of the daily occurrences at the high school, through the medium of articles in the Ritzville Journal-Times. It is hoped that by the fall of '30 it will be possible to sponsor an individual high school weekly publication.

RIFLE CLUB

The purpose of this organization is to create an interest in developing the accurateness in marksmanship and to bring into closer contact those who are especially interested in this activity.

The following are members: Arthur Howey, Goodrich Reese, Bert Pierce, George Schnurbusch and David Schneider.

SENIOR HOME ECONOMICS CLUB

Purpose: To raise funds to buy material to improve the Home Economics Department.

Officers for the year are:

President Alma Thom
 Vice President Milda Rogel
 Secretary and Treasurer Olga Nauditt
 Faculty Member in Charge Miss Philips

OFFICE FORCE

Each period of the day some upperclassman has charge of the principal's office. The duties of this person are to gather the attendance slips from each teacher and make a report to both principals (Junior and Senior High), and to the superintendent. The persons having charge during first and fifth periods make a report to each teacher in the school.

Another duty of the office force is to answer the telephone

Office Force—Continued

and call or make note of a call for anyone calling a student.

Those in charge of the office are:

1st. Period:	5th. Period:
ROSE PFLUGRATH	ALMA SCOTT
2nd. Period:	6th. Period:
MILDRED HARRIS	ELSIE REIFF
3rd. Period:	7th. Period:
HARRY CROSS	EDNA HOEFEL
4th. Period:	8th. Period:
DEWAYNE KREAGER	LOUISE SICKMANN

LIBRARY

At the beginning of the year the library was reorganized and many of the old and useless volumes were discarded, while some few new ones were added. Reference shelves for various subjects were provided and a new magazine section was installed. The magazines which may be had are:

LITERARY DIGEST	SCIENTIFIC AMERICAN
MENTOR	AMERICAN
REVIEW OF REVIEWS	AMERICAN BOY
ATLANTIC MONTHLY	HARPER'S BAZAAR
ASIA	POPULAR SCIENCE
ATHLETIC JOURNAL	NATIONAL REPUBLIC
GOLDEN BOOK	CHEMICAL LEAFLET
CURRENT HISTORY	WORLD'S WORK

Miss Killin is faculty advisor and Joan Dence is head student

Library—Continued

librarian. Various student librarians are appointed for each of the eight periods during the day.

The Librarians are:

1st. Period:	5th. Period:
ALMA THOM	CARLTON DILLINGHAM
2nd. Period:	6th. Period:
MILDRED SETTERLAND	GLORIA KANZLER
3rd. Period:	7th. Period:
CATHERINE KOCH	HANNAH BAUMANN
4th. Period:	8th. Period:
ART KALKWARF	LOTUS WILKENING

It is the duty of the librarians to see that no student enters or leaves without a pass, and that the library is not used as a loafing place. With all the improvements it is now a very desirable place for research work and study.

The librarian will check out any books or magazines and they are not to be taken from the library unless they are properly checked.

The library must be closed from the end of the eighth period to the beginning of the first period and during the noon hour.

CAFETERIA

This is the second year that a successful cafeteria has been conducted by the advanced Home Economics Class.

A unique managerial system is in use this year, which gives each member of the class practice in running the cafeteria. Each week a different girl has charge of the menus, as well buying the necessary articles and managing the finances. Her plans are all made and approved by Miss Philips before her week starts. The money made is used to buy equipment for the department.

Cafeteria—Continued

The menus run along the following lines:

Two different kinds of sandwiches or hot rolls, a cooked hot dish, a salad or desert and cocoa or milk.

The cafeteria is well patronized by members of the faculty, and students.

Those in the class are:

Olga Nauditt	Freida Koch
Rose Pflugrath	Verna Schwisow
Evelyn Freise	Doris Warren
Alma Thom	

W. S. C. STUDENT CONVENTION

Each year, at the invitation of the State College of Washington, it is the custom for this high school to send four delegates from the student body to the annual W. S. C. High School Student Leaders' Convention. These delegates are elected from the upperclassmen of the high school by the Student Council.

Among the qualifications we find considered as a basis for the selection of these delegates are:

1. Student Leadership.
2. High Scholastic Standing.
3. Not a delegate a previous year.
4. Attitude toward school life.
5. Ability to make full report to the student body upon their return from the convention.

The delegates for the 1930 conference held April 24, 25 and 26th were: Helen Koch and Dewayne Kreager from the Senior Class; Alma Scott and Raymond Emerson from the Junior Class.

SOCIETY AND DRAMATICS

SENIOR CLASS PLAY

"The Goose Hangs High," famous stock production by Lewis Beach, was selected as the Senior class play for this year. The play is a comedy in three acts, centers around the American family and its troubles. It deals with true life and is a production that will long be remembered by those who witnessed it.

May 10 was the date of presentation—the play being a success in every way. Much credit is due the director, Miss Vivian Killin.

The cast was as follows:

Bernard Ingals	Quaife Dann
Eunice Ingals	Mildred Harris
Noel Derby	George Schnurbusch
Leo Day	Melvin Stoops
Rhoda	Gloria Kanzler
Julia Murdoch	Lola Hollenshead
Mrs. Bradley	Bertha Weise
Hugh Ingals	Dewayne Kreager
Ronald Murdoch	Howard Leonard
Lois Ingals	Edna Hoefel
Bradley Ingals	Harry Cross
Dagmar Carroll	Helen Koch
Elliot Kimberly	Charles Schellenger

The business staff was headed by Bert Pierce, business manager. Joan Dence was the prompter. Charles Schellenger and Elsie Reiff were property manager and property mistress, respectively.

Art Kalkwarf and George Schnurbusch were the stage carpenters and Lester Crawley was electrician.

ORCHESTRA

The orchestra was organized for the purpose of enabling the students to develop their talent in this line under proper instruction.

Those playing instruments in the orchestra are as follows:

First violins: Mildred Setterland, Alice Vehrs;

Second violins: Mamie Vehrs, Lester Crawley;

Clarinet: Doris Proctor, Catherine Koch;

Trumpets: Rodney Kittel, Alvin Wilcox, Wayne Rosenoff, Keith Imus;

Baritone: Harland Proctor.

Saxophones: Sheldon Gillis, Elsie Rieff, Rosa Vehrs;

Trombones: Vincent Imus, Charles Kittel;

Drums: Robert Towers;

Piano: Wilma Thom.

DIRECTOR: MISS CURRIE

PEP BAND

The Pep Band is a new project in the Ritzville High School, but one that the institution is already very proud of. It aids materially in creating pep for the athletic contests, rallies, etc., and gives zest to all occasions.

Twelve Senior High and five Junior High students took part, under the direction of Miss Florence Currie.

JUNIOR CLASS PLAY

The Junior Class Play, "The Whole Town's Talking," a three-act farce, was a complete success, financially as well as in production. The play, noted for its laughs, kept the crowd in an uproarious mood throughout the entire evening. Miss Vivian Killin directed the production.

The cast was as follows:

Ethel Simmons	Mary Hille
Henry Simmons	Charles Dann
Mrs. Henry Simmons	Doris Proctor
Sally Otis	Ona Luiten
Lila Wilson	Clara Koch
Roger Shields	Winton Miller
Sadie Bloom	Clara Sickmann
Chester Binney	Harold Pfannekuchen
Annie	Edythe Taylor
Donald Swift	Robert Lee
Letty Lythe	Daisy Taylor
The Taxi Driver	Milton Wolsborn

The Business Staff for the play was as follows: Milton Wolsborn, business manager; Carlton Dillingham, Earl Luiten, Joel Brown, stage managers; Edna Brown, property mistress; Clara Sickmann, wardrobe mistress; Anna VanBuren, makeup assistant.

OPERETTA

"Captain Crossbones," a musical comedy in two acts, presented as the annual High School Operetta, was an unusual success this year. March 15 was the date of presentation and the operetta was put on before a near capacity crowd.

Miss Florence Currie, the Supervisor of Music, directed the presentation.

The operetta was pirate in nature, as the name implies, and the main thought of the plot centered around subsequent pirate acts, under the leadership of Captain Crossbones, who was discovered to be Richard Stoneybroke.

The cast was as follows:

Theresa, daughter of a Spanish gradee	Alma Scott
Richard Stoneybroke, an American planter	Robert Lee
Don Cubeb de Cigarro, father of Theresa	Quaife Dann
Donna Isabella, wife of Don Cubeb	Minnie Gaiser
Captain Bombastio, of the Island Police	Bert Pierce
Elinor, an American heiress	Martha Neutzmann
Bill Pilgrim, a retired pugilist	Aaron Thiel
Miss Pelling, Theresa's old maid tutor	Davida Dann
Anthony Law, the lawyer	Walter Meyer
Kitty, the postmistress	Geraldine Pence
Zim, of the Island Police	Milton Wolsborn
Zam, of the Island Police	Charles Dann

The business staff for the production included: Dewayne Kreager, Business Manager; Lester Crawley, Assistant Manager; Arthur Kalkwarf and George Schnurbusch, Stage Managers; Carlton Dillingham, Electrician; and Mildred Harris, Property Mistress.

The chorus for the operetta included: Edell Heinemann, Lola Hollenshead, Ethel Imus, Gloria Kanzler, Evelyn Krause, Anita Nuetzmann, Marjorie Pierce, Esther Rieker, Laura Rieker, Orlinda Rogel, Esther Sellars, Louise Sickmann, Thelma Stoops, Daisy Taylor, Alma Thom, Mildred Womach, Jonathan Borgens, George Becker, Lester Crawley, Winston Doris, Keith Imus, Vincent Imus, Walter Jantz, Floyd Koch, Otto Miller, Winton Miller, Albert Pflugrath and Harold Wagner.

SENIOR CLASS NIGHT

Something new in the matter of Class Day exercises for the graduating class was started this year by the Class of '30. Instead of the usual informal program during one of the morning programs, this year's graduating class held a Class Night program.

Class Night provided a full evening's entertainment to the rest of the high school and the people of the community. Novelty skits, humorous incidents, including the reading of the class will, class history and class prophecy, various musical numbers, and speeches by the Valedictorian and Salutatorian completed the evening. Every member of the graduating class participated. The program was presented during the week preceding graduation.

The Class of 1930 certainly started something when they inaugurated the feature of Class Night, and it is hoped that future classes will follow their lead in presenting this program.

JUNIOR-SENIOR BANQUET

The Juniors entertained the Seniors at a banquet that was held in the Odd Fellows Hall, May 10, 1930. This was the largest affair of its kind ever held in the history of Ritzville High School. Provisions were made to accommodate 116 including students and teachers.

Harold Pfanekuchen was toastmaster. Alma Scott gave the welcome speech for the Juniors and Dewayne Kreager of the Senior Class responded. Quaife Dann, a Senior, gave a humorous talk on the subject, "The Tailspin." The afterdinner speeches were carried out in the form of a burlesque airplane ride. Superintendent Muzzall gave a most interesting talk which proved very beneficial to the graduating Seniors.

FOOTBALL BANQUET

The football banquet for the team of 1929 was given by the Sophomore Class. This is the first occasion that a Sophomore class has taken on this banquet as their project. However, the occasion proved to be one of the most enjoyable of the year, particularly to

Football—Continued

the football boys, who were at that time able to break training and indulge in a good feast.

The program was carried out as a burlesque football game. Every detail was cared for by the Sophomore Class under the direction of their Class Advisor, Miss Doris Philips. Quaife Dann was toastmaster and the program included talks by various townspeople as well as students.

ALUMNI BANQUET

It has become a tradition in Ritzville High School for the alumni association of the institution to each year honor the graduating class with a welcome banquet. The occasion is always one that is very enjoyable, for it not only welcomes the Graduating Class to the ranks of the alumni, but it brings together many of the old students of Ritzville High School for an evening of good fun.

Mr. Jake Hoefel, of the class of '21 was the toastmaster for the 1930 banquet. A thoroughly enjoyable evening was had by all.

Mr. Carl Clodius, the alumni president, made the address of welcome to the graduating Seniors, and Dewayne Kreager, Senior Class president, responded.

A feature of the 1930 Banquet was the twenty-fifth anniversary of the graduation of the first class, the class of 1905, from Ritzville High School.

Good eats, a good program and general goodfellowship, were all combined to make that evening, May 28th, a most memorable occasion, particularly for the Seniors, as it marked the close of their high school career.

CLASS PICNICS

Each year it is the custom to grant each class of the high school the privilege of going to some outside location for their annual picnic. The Seniors get first choice in selecting their site, by right of seniority, the Juniors second choice, etc.

However, this year, due to the ever growing spirit of friendship between classes, all of three of the Senior High groups: Seniors, Juniors and Sophomores, agreed to hold their picnics jointly as one big High School pleasure day. Friday, May 23, was the day selected for the picnics. The place was Newman Lake, just east of Spokane. Everybody reported a great time.

COMMENCEMENT WEEK

FRIDAY, MAY 23—Class picnics held at Newman lake, near Spokane.

SUNDAY, MAY 25—Baccalaureate service in High School auditorium. Sermon delivered by the Rev. E. A. Rein of Ritzville.

MONDAY, MAY 26—Class Night program.

TUESDAY, MAY 27—Commencement exercises in High School auditorium. Main address delivered by Dr. Ralph E. Tleje, head of the department of English, Cheney Normal school.

OUTLINE CURRICULUMS

GENERAL COURSE

Required:	Recommended:
English 9	German 1
Algebra	
Latin 1	
General Science	
English 10	German 2
Plane Geometry	
Latin 2	
Biology	
English 11	Home Economics 9
U. S. History and Government	Typing
Physics or Chemistry	Bookkeeping
English 12	Music Appreciation
Economics	Advanced Mathematics
Sociology	Speech

Outline Curriculums—Continued

SCIENTIFIC COURSE

Required	Recommended
English 9 Algebra General Science	Foreign Languages Home Economics Manual Arts Social Science 9
English 10 Plane Geometry Biology	Foreign Language Social Science 9
English 11 Physics U. S. History and Government	Advanced Mathematics Speech
English 12 Chemistry	Economics and Sociology Music Appreciation
English 12 Chemistry	Economics and Sociology Music Appreciation

HOME ECONOMICS COURSE

English 9 Home Economics 9 Algebra	General Science
English 10 Home Economics 10 Plane Geometry Biology	
English 11 Home Economics 11 Chemistry Latin or German	
English 12 Music Appreciation U. S. History and Government Latin or German	

Outline Curriculums—Continued

COMMERCIAL COURSE

Required	Recommended
English 9 Algebra General Science	Latin or German
English 10 Geometry Bookkeeping 10	Latin or German
English 11 Typing 1 Stenography 2	Commercial Geography and Law Bookkeeping 11
Typing 2 Stenography 2 U. S. History and Government Chemistry	

GRADUATION REQUIREMENTS

Thirty-two credits or sixteen units are required for graduation. A maximum of one unit or two credits may be earned toward graduation in physical education, glee club, debate and other class-room activities for which credit is given.

One quarter credit per year is given in physical education and is required for graduation unless the pupil is excused by the principal upon written order signed by a physician.

The thirty-two credits must include:

(A.) The following required courses:

1. English—Three units or six credits if two years of a foreign language is taken. Four units or eight credits if no foreign language is taken.

2. Laboratory Science—One unit or two credits.

Graduation Requirements—Continued

3. U. S. History and Government—One unit or two credits.

(B.) A major and two minors in the following subjects: (a major is three units of a subject, and a minor is two units of a subject.)

Science, social science, mathematics, foreign language, music, commercial, home economics, manual arts. The foreign language major must be three years in one language or two years in each of two languages.

REQUIREMENTS FOR COLLEGE RECOMMENDATION

Requirements for Washington State College:

A student admitted to the State College of Washington must be a graduate of an accredited high school of this state or must have fifteen units for entrance, including the following:

English	3 units	or 4
Mathematics	1 unit	or 2
Social Science	1 unit	or 2
Natural Science	1 unit	or 2

No credit is allowed in penmanship, spelling, chorus, glee club, debating, physical training, or extra-curricular activities.

Freshman Standing:

You cannot be enrolled at the State College unless you are in the upper three-quarters of your graduating class. This is Class A, and continuation in college depends upon the quality of work done.

If you fall into the lower one-fourths of your graduating class you may be admitted to the State College upon recommendation for trial by the high school principal or superintendent. Such students are admitted on probation as members of the B. section of the freshman class. If they meet the scholastic requirements by the end of the first semester they are allowed to stay on; if not they will be asked to leave school.

Requirements for University of Washington:

Units required: A student having graduated from an accredited high school is required to present twelve units of work done entirely in the tenth, eleventh and twelfth grades. Of the twelve units, not more than four may be in courses primarily designed for ninth grade students. One unit may be made up in fractional credits earned in music, physical education, debate, dramatics, and in other subjects accepted by the high school for graduation. The twelve units should be distributed as follows:

(A.) Not more than three units in technical or vocational subjects (except for the College of Business Administration).

(B.) At least eight units from academic groups. (English, mathematics, natural science, social science, foreign language) so chosen as to include two units in English, but nine academic units are required for all students who do not present a unit of fractional credits in other subjects accepted by the high school for graduation.

(C.) The specific requirements of the college to which admission is sought must be met. These are as follows:

Liberal Arts: A second unit of one foreign language, and one unit of geometry. The first unit is usually taken in the ninth grade. If taken later, it will count as part of the twelve units required.

Science: A second unit of one foreign language, and one unit of geometry.

Business Administration: One unit of mathematics. Six units of technical electives may be offered, at least three of which must be in commercial subjects. Commercial arithmetic and elementary algebra do not satisfy this requirement.

Engineering: Solid geometry, advanced algebra, one unit of physics, one-half unit of shop work, and one unit of plane geometry.

Fine Arts: Two units of foreign language, one of which may be taken in the ninth grade; one unit of plane geometry, in addition to the language requirement.

Fisheries: No specific requirements.

Forestry: Advanced algebra, one unit of plane geometry.

Mines: One unit of plane geometry, solid geometry, advanced algebra, and one unit of physics.

Pharmacy: No specific requirements.

Requirements U. of W.—Continued

Scholarship Required—A minimum of nine units must be represented by grades which are at least one step above the passing mark when letters are used to designate grades, or above the passing percentile grade at least one-fourth of the difference between the passing grade and 100 per cent. Such grades shall be known as recommending grades. Beginning with the autumn quarter of 1931-32, and thereafter, eleven such units will be required.

Recommending Grades—A student who fails to present recommending grades in the required number of units at the time of graduating from high school may either return to high school for further study or take the entrance examinations of the College Entrance Examination Board in the subjects which recommending grades are not received.

When a student repeats or reviews subjects for the purpose of earning recommending grades, he should choose, when choice is possible, subjects which will be of greatest value to him in college work. The advice of the high school principal should be sought in deciding upon approved subjects.

Number of Subjects—No student will be permitted to take more or less than four academic subjects except by permission of the principal. In general students who have not fallen below "B" in any subject will be permitted to take five subjects, if they so desire. Every student should attempt to do as high quality of work as possible in a limited number of subjects rather than average or poor work in a large number of subjects. An exception will occur in the eighth grade where five subjects will be carried by all pupils.

BUSSES

Ritzville School District 139 owns and operates ten school busses for the transportation of students living in the country. These are painted yellow with the name and number of the district. They seat approximately thirty children and are driven by insured drivers.

The following are the rules governing the busses:

- (1) All pupils shall be seated immediately upon entering the bus.
- (2) No pupil shall stand or move about during the trip.
- (3) No pupil shall enter or leave the bus until it has come to a full stop.
- (4) If a pupil has not entered the bus or reported within two minutes after schedule time for leaving his home, the bus shall not be held longer on his account.
- (5) If the bus is delayed by causes for which the pupil is not responsible he shall not be considered tardy.
- (6) The drivers are in complete authority. Children are to obey all reasonable requests of the drivers.

CHANGE OF SCHEDULE

To make a change of schedule it is necessary to talk to the principal and teacher who will be concerned.

If a satisfactory arrangement is made, a pupil must see that his card in the office file is corrected.

CARE OF PROPERTY

Pupils are responsible for reasonable care of all property, and are responsible for all damage of same. This includes buildings, books, furniture, busses, etc. Virtually all school furniture is new and responsibility for keeping it in good condition rests with the students. It has been said that the spirit of a school can be determined to a large degree by its buildings and equipment.

GENERAL RULES AND REGULATIONS

ASSEMBLIES

The regular associated student body assemblies are held every Friday morning. They are a period in length and the time used here is made up by rotating the periods so that no one period is left out consistently. For example: One week the first period is left out, next week, second period, and so on through the day. Although this is the first year that this plan has been used it has proven to be very satisfactory.

The programs are cared for each week by a committee composed of the following: Two faculty members, one each from Junior and Senior High, as supervisors, and four students, two from each Junior and Senior High as assistants.

A general rule for the programs is: Each program should have definite educational value, with a view to setting desirable standards of conduct and appreciation for music, dramatics, recreation, and various student activities.

Once a month the program period is given over to separate business assemblies. At these meetings the student body presidents preside.

BELL SIGNALS

One long, three short	Fire Signal
Two short (hall bell)	Philip Verner
Three short (room bell)	Teacher
Three long (all bells)	General Assembly, main auditorium
Four short	Junior High Assembly
Two long	Senior High Assembly

Care of Property—Continued

Any pupil who shall cut, deface, or otherwise injure any school furniture, fence, or outbuilding thereof, or any book or books belonging to the district library shall be liable to suspension and punishment, or the parent or guardian of such pupils shall be liable for damages.

EXCUSES

The State School Law requires the attendance of children between the ages of 8 and sixteen and in case of absence, tardiness, or dismissal, before the close of school, a written excuse from parent or guardian is required. Sickness is the only valid excuse authorized by law.

Excuse blanks may be secured from the principal's office, and must be signed by each teacher and parent or guardian.

THE FILING SYSTEM

A filing cabinet is kept in the principal's office for use in finding pupils during the day for telephone or any other information. These files contain each pupil's daily schedule, telephone number and address. Any change of schedule must be recorded there.

In the superintendent's office is a permanent student record. In this file, arranged alphabetically, are all the students in the two upper units of the system with their elementary school record, and all semester grades received in high school. These files may be inspected by securing permission from the superintendent.

LOCKERS

Street lockers and gym lockers may be secured at the first of the year by a deposit of twenty-five cents for a key. If the key is returned at the close of school the money is refunded. It is

Lockers—Continued

requested that all coats, books, and other accessories be locked up in this manner. If the locker is not locked the student is held responsible for any loss of property.

PASS KEY

A pass key for the lockers is kept in the principal's office and may be secured in case a student has lost or misplaced his key.

MARKING SYSTEM

- A—Excellent.
- B—Above Average
- C—Average
- D—Below Average
- F—Failure
- Inc.—Incomplete

CONDUCT

Wilful disobedience, habitual truancy, vulgarity or profanity, the use of tobacco on or about the school premises or busses, stealing, the carrying of deadly weapons, the carrying or using of dangerous playthings, shall constitute good cause for expulsion.

STUDY HALLS

General rules of conduct in the study hall are:

1. No talking without the permission of teacher in charge.
2. Remain standing while talking.
3. Passes to library or to other faculty members are received

Study Halls—Continued

from teacher in charge of study hall and must be returned signed by other teacher or librarian. In case the pass is not returned the student is held responsible for his time and must explain to the principal.

4. One boy and one girl may leave the study hall at any time by signing out on the pass book and signing in within five minutes. In case longer absence from hall a excuse is required.

REGISTRATION

Registration in all classes is held on the first day of school. All individual schedules are checked by some faculty member in charge of one of the three classes, Sophomore, Junior or Senior. Freshmen must present their eighth grade diplomas and new students their report cards of the previous year.

Second semester registration is held in the office of the principal and each student's schedule is checked by the principal or his assistants.

TELEPHONE

There are two telephones in the building, one in the superintendent's office and one in the principal's office.

The one in the principal's office is the only one for public use, and may be used by students at any time the office is open.

Rules for students on office duty when answering the telephone are:

1. Answer the phone promptly by saying, "High School."
2. If a pupil is wanted, take the name and consult the index of students and determine if the student wanted is in class or study hall. If in class have the person call later or take the number and have the student call at the end of period. If in study hall call the student to the phone.

Telephone—Continued

3. If a teacher is wanted consult the daily program and see if he or she is on duty. If in class ask the party calling if you may have the teacher call at the end of the period. If the matter is urgent ask them to hold the line and call the teacher at once.

4. If the superintendent is wanted give one short ring of the buzzer and do not hang up the receiver until he answers the phone. If he does not answer state that you cannot find him at present and ask the party to call again.

5. Be courteous at all times.

VISITORS

Visitors are always cordially invited to inspect the school. When they come they must be shown due courtesy by all students. Pupils should direct them to the principal's office where the student on office duty will assist them in accomplishing their objective. In case they desire to talk to some faculty member or student, that person will be called to the office.

WITHDRAWAL FROM SCHOOL

When a student wishes to withdraw from school, all necessary arrangements may be made with the principal, from whom past credits and withdrawal permit may be secured.

SOCIAL CALENDAR

Sept. 9, 1929	Registration
Sept. 10, 1929	First day of school
Oct. 31, 1929	Pasco football rally
Nov. 1, 1929	Lewis and Clark debate

Social Calendar—Continued

Nov. 16, 1929	Football Banquet
Nov. 23, 1929	Junior Class Play
Nov. 25, 26, 27, 1929	Teachers' Institute
Nov. 28, 29, 1929	Thanksgiving Vacation
Dec. 13, 1929	North Central debate
Dec. 16, 1929	Home Economics Christmas party
Dec. 20-29, 1929	Christmas Vacation
Jan. 1, 1930	New Years Day (Holiday)
Jan. 10, 1930	Odessa Debate
Jan. 22-24, 1930	Semester Exams.
Jan. 27, 1930	Second Semester Begins
Feb. 21-23, 1930	Sub-District Basketball Tournament
Feb. 28, 1930	Junior High Program
March 14, 15, 1930	Operetta
April 5, 1930	Red "R" Smoker
April 9, 10, 11, 1930	Inland Empire Teachers Association
May 10, 1930	Senior Class Play
May 17, 1930	Junior-Senior Banquet
May 25, 1930	Baccalaureate Service
May 26, 1930	Class Night
May 27, 1930	Commencement
May 28, 1930	Alumni Banquet
May 28, 1930	Last Day of School

SCHOOL CALENDAR

1930-31

September 6, Saturday	Faculty Meetings
September 8, Monday	Registration
September 9, Tuesday	Regular Classes Begin
October 3, Friday	End of First Month
October 17, Friday	End of First Six Weeks
October 31, Friday	End of Second Month
November 11, Tuesday	Armistice Day (Not legal school holiday)
November 24-25-26	County Institute
November 27-28	Thanksgiving Vacation

School Calendar—Continued

November 28, Friday	End of Month and Second Six Weeks Period
Dec. 19, Friday, to Dec. 19, Monday	Christmas Vacation
December 29, Monday	School Re-opens
January 1, Thursday	New Years Day
January 2, Friday	End of Fourth Month
January 16, Friday	End of Semester and Third Six Weeks
January 19, Monday	Second Semester Begins
January 30, Friday	End of Fifth Month
February 12, Thursday	Lincoln's Birthday
February 27, Friday	End of Sixth Month and Fourth Six Weeks
March 27, Friday	End of Seventh Month
April 9, 10, Thurs. and Fri.	Spring Vacation, I. E. T. A. Spokane
April 10, Friday	End of Fifth Six Weeks
April 24, Friday	End of Eighth Month
May 15, Friday	Senior Class Day Exercises
May 22, Friday	Junior High Promotion Exercises
May 24, Sunday	Baccalaureate Services
May 26, Tuesday	Last day of School

DAILY SCHEDULE

The bells are automatically rung by an electric clock system, centered in the superintendent's office:

8:30	Opening Bell
Period 1 9:00	Period Begins
9:04	Tardy Bell
Period 2 9:45	Period Begins
9:48	Tardy Bell
Period 3 10:30	Period Begins
10:33	Tardy Bell
Period 4 11:15	Period Begins
11:18	Tardy Bell
12:00	School Dismissed

Daily Schedule—Continued

Period 5 12:45	School Takes Up
12:48	Tardy Bell
Period 6 1:30	Period Begins
1:33	Tardy Bell
Period 7 2:15	Period Begins
2:18	Tardy Bell
Period 8 3:00	Period Begins
3:03	Tardy Bell
3:45	School Dismissed

COMMITTEES FOR DRAFTING THE CONSTITUTION

- | | |
|--|---|
| 1. Names, Purposes and Membership—
1. Arthur Kalkwarf
2. Rosemary Bauer
3. Clara Koch

2. Meetings—
1. Harry Cross
2. Milton Wolsborn

3. Officers and Elections of Officers—
1. Alma Scott
2. Dewayne Kreager
3. Charles Kittel

4. Duties of Officers—
1. Mary Hille
2. Raymond Emerson
3. Milda Rogel

5. Student Council—Powers and Duties—
1. Charles Dann
2. Goodrich Reese
3. Katherine Koch | 6. Finances—
1. Lester Crawley
2. Carlton Dillingham
3. Margie Pierce

7. Athletics—
1. Harry Cross
2. Richard Kembel
3. Esther Sellars

8. Athletic Awards and Debate—
1. Arther Howey
2. Helen Koch
3. Loren McCollom

9. Extra Activities—
1. Chris Heimbigner
2. Rudolph Rogel
3. Doris Proctor

10. Amendments—
1. Members of Student Council. |
|--|---|

CONSTITUTION OF RITZVILLE HIGH SCHOOL

ARTICLE I.

Name, Purpose and Membership

Section I. Name. The name of this organization shall be "The Associated Students of Ritzville High School."

Section II. Purpose. The principle purposes of this organization shall be to improve the conditions in and about our school through cooperation with the faculty, to unify all student organizations under one general control, to promote the general activities and enterprises of the school, and to develop in the student a spirit of self-government.

Section III. Membership. All regularly enrolled students and the faculty are members of the Student Body. Membership entitles one only to vote and hold office.

ARTICLE II.

Meetings

Section I. Regular meetings of the A. S. of R. H. S. shall be held at least twice every semester, and special meetings may be called at the request of the President, Student Council, or 10 per cent of the members of the A. S. of R. H. S. subject to the approval of the Principal.

Section II. Regular meetings of the Student Council shall be held once every two weeks, and special meetings may be called by the chairman at the request of two members or the principal.

Section III. A notice of the time and place of all meetings of the A. S. of R. H. S. or Student Council shall be posted on the bulletin board at least one day before the meeting convenes.

Section IV. All meetings shall be governed by "Robert's Rules of Order."

Section V. A quorum of 50 per cent of the Student Body will be necessary to carry on all meetings.

ARTICLE III.

Officers and Elections of Officers

Section I. The officers of the A. S. of R. H. S. shall be 4

Constitution—Continued

in number and shall consist of a President, Vice President, a Secretary and a Treasurer, who shall serve for one complete school year following the election.

Section II. There shall be a Student Council consisting of the principal, the student body officers, president, secretary and members-at-large from each class, the president of the "R" Club and the president of Girls' League.

Section III. The president, vice president, secretary and treasurer shall be elected by the members of the A. S. of R. H. S. The president to come from the incoming Senior Class, the vice-president from the incoming Junior Class, and the secretary and treasurer to come from either the Senior or Junior Class.

Section IV. The Athletic Captain and Manager shall be selected by the Athletic Coach.

Section V. The election of the four officers of the A. S. of R. H. S., namely, president, vice president, secretary and treasurer, shall be by a majority ballot of the members of A. S. of R. H. S. in meeting assembled; provided that no student shall be eligible for any office who has not done passing work, as defined by the faculty, the past year.

Section VI. The Yell King and his assistants shall be elected by the Student Council.

Section VII. The elections shall be by written secret ballot and shall be held the first business meeting in May, the officers to serve for the following school year.

ARTICLE IV.

Duties of Officers

Section I. The President of the Association shall preside at all the meetings of the association and the student council and perform such other duties as usually devolve upon such offices.

Section II. The Vice President of the association shall perform the duties of the president in his absence; and he shall be the chairman of student ticket committees.

Section III. The Secretary of the association shall keep a record of all of the association and of the executive committee, and

Constitution—Continued

attend to all correspondence for the association.

Section IV. The Treasurer of the Association shall have charge of the general funds and collections of the student body's taxes. He shall provide for a receipt of all the association's fees, and keep an account for all receipts and disbursements.

Section V. The Yell King and his assistants shall have charge of the yell and song sections of all athletic events.

ARTICLE V.**Powers of the Student Council**

Section I. To pass such by-laws as are necessary to regulate the government of the Associated Students.

Section II. To authorize and approve class parties and picnics and other activities.

Section III. To adjust such difficulties that may arise between classes, societies, or any other organizations within the Ritzville High School.

Section IV. To authorize expenditure of the funds of the Associated Students.

Section V. The Student Council, on their own initiative or upon petition of 33 1-3 per cent of the Student Body, may present amendments to the constitution. An amendment as passed by a vote of a 2-3 majority.

Section VI. To officially award school emblems.

Section VII. To try all cases of violation, to administer punishment to those guilty of violation of rules governing Student Association. Impeachment of any officer must be with three-fourths majority.

Section VIII. The above powers to be exercised by 2-3 majority vote unless otherwise stipulated.

Duties

Aid in promotion and development of all student activities having approval of the Council.

It shall be the duty of the Student Council to exercise all powers

Constitution—Continued

in the various athletic activities as follows:

In basketball—one-half the halves during the regular playing season or 1-3 of the halves, and in sub-district or district tournament.

In baseball—one-half of the innings. Pitcher—one-third of the innings.

In track—5 points in dual or triangular meet.

In tennis—To be decided later.

Exceptions to any one of these sports may be made upon recommendation of the coach and the approval of the Student Council.

Section III.**Description of Letters**

In all athletics there shall be a standardized 5 inch black letter for the boys. The letters shall be red and black chinnelle with the black as a background. An exact repetition of this letter shall be the reward for girls, except that it shall be a 4" letter instead of the 5" letter. The manager's letter shall be the standard 5" letter with the exception of a small "M" on the middle bar.

Sweaters

Section IV. The official sweater is red in color. The left sleeve between the elbow and the shoulder is reserved for stripes, symbolic of athletic first team awards.

Section V. The requirements for stripes are as follows: For the first letter award a stripe shall be given, and for the following years in repetition of the same sport, another stripe.

Section VI. Eligibility for letters and sweaters, under these rules shall be determined by the coach of the activity who shall submit a list of those eligible to the Student Council at the end of the season.

Section VII. In case of the manager, a school letter may be awarded only on the recommendation of the coach, and on special dispensation of the Student Council.

Section VIII. The presentation of these awards shall be as follows: A Certificate of Award and athletic letters shall be given at the end of each playing season.

Section IX. A bronze letter in the shape of a pin shall be

Constitution—Continued

granted it, for the welfare of the Student Body of R. H. S.

ARTICLE VI**Finances**

Section I. The Associated Students of Ritzville High School shall obtain their finances by the following means:

1. Sale of student tickets.

2. Returns from athletic events, debate and High School entertainments.

Section II. Money can be paid out upon authorization by the principal and the Student Council.

ARTICLE VII.**Athletics**

The athletic program shall consist of the sports, both major and minor, that are recognized as being advisable.

Section II. To be eligible for athletic competition as a representative of this school one must be a member of the A. S. of R. H. S. and comply with the eligibility rules of the Washington High School Athletics Association, as well as special school rules.

ARTICLE VIII.**Athletic Awards and Debate**

Section I. Each year the A. S. of R. H. S. shall award pins in the following activities:

In debate—the award shall be a standardized gold pin. Each additional year, during which a student makes the team, a bar shall be added. This award shall be given only to those who have taken active participation in the debates and those having the recommendation of the debate coach.

In oratory and declamation—the award shall be a silver pin in the shape of a scroll with the engraving "R. H. S." upon it, providing the contest is sponsored by the school. These also shall be given only upon the recommendation of the faculty member in charge.

Section II. Each year the A. S. of R. H. S. shall award letters

Constitution—Continued

awarded to any graduating Senior with an average of 90 per cent throughout his school career.

ARTICLE IX.**Extra Activities**

Section I. Any club or society under the R. H. S. shall have a charter.

Section II. The Student Council shall grant all charters. The charters shall be passed by a 2-3 vote of the Student Council. Every charter must give the purpose of the club or society to which it is granted.

Section III. The Student Council may suspend any charters when the club or society fails to fulfill the provisions of its charter. The Ritzville High School recognizes all organizations as the Latin Club, Glee Club, Girls' League, Pep Band, Press Club, Home Economics Club, Orchestra and the "R" Club.

ARTICLE X.**Amendments**

Section I. This constitution can be amended by a 2-3 vote of the members of the Student Body.

NOTE: No by-laws have been drawn up at this time. This is only the first draft of the constitution and plans call for several additions in another year.

SONGS

ALMA MATER

Ritzville Hi, our Alma Mater,
We will guard thee on and on.
Fellows gather round and cheer her,
Chant her glories, Washington!
Roar the praises of her warriors,
Sing the story, one and all.
Down the grid-iron urge her heroes
Who respond to every call.

March, march on down the field,
Fighting for Ritzville Hi.
Plow through old line,
Their strength we defy!
We'll give a long cheer for Exley's men,
We are out to win again;
. Hi may fight to the end
But we will win!

OH RITZVILLE HIGH YOU KNOW WE LOVE YOU

Oh Ritzville Hi, you know we love you
And we'll work for you each day,
Oh Ritzville Hi there's none above you,
You surpass in every way.
In future years while dreaming of you,
We will cherish memories true.
Oh Ritzville High, it's your's the glory,
And we owe it all to you.

Songs—Continued

QUIN QUIN QUALLI

Quin Quin Qualli Alli Molli Das Nix
Um Quin Qua Um Quin Qua
Quin Quin Qualli Alli Molli Das Nix
Um Quin Qua Um Quin Qua
Oh Ritzville High School Qualli Alli Alli
Um Pa
Oh Ritzville High School Qualli Alli Um
Pa, (etc).

OH RITZVILLE, THE CONFIDENCE THAT
WE HAVE IN YOU

Oh Ritzville High School, the confidence
that we have in you!
We are true blue! We'll boost for you!
And as long as the red and black shall
over us fly
We'll boost for you, Oh Ritzville High.

IN THOSE DEAR OLD HIGH SCHOOL DAYS

In those dear old High School days,
In those dear old High School days,
Free from sorrow, care and strife,
The sweetest moments of my life.
You can hear those old bells ring,
You can hear those voices sing.
Boola Boola Boola Boola
In those dear old High School days.

Songs—Continued

RAH! RAH! RITZVILLE

Rah, Rah, Rah, Ritzville
Ritzville must win,
Fight to the finish,
Never give in.
Rah, Rah, Rah, You do your best boys
We'll do the rest boys
Rah, Rah, Rah, Ritzville must win.

ON, OH RITZVILLE

On Oh Ritzville, on Oh Ritzville,
Plunge right thru that line.
Touchdown every time,
RAH, RAH, RAH!
On Oh Ritzville, on Oh Ritzville,
When the ball goes down the field it's victory
or die,
So cheer for the red and black and
RITZVILLE HIGH!

BOOLA BOOLA

Boola Boola, Boola Boola,
Boola Boola, Boola Boola,
Boola Boola, Boola Boola,
Boola Boola, Boola, Boo,
Iskee Wee Wee, Wiskee Wah, Wah.
O you monkey eye, dear old Ritzville High,
And we'll rough house old
Till they holler Boola Boo.

Songs—Continued

WAVING OUR SHAKERS, OUR RED AND
BLACK SHAKERS

Waving our shakers, our red and black
shakers,
The shakers of Ritzville High:
Everyone boost her as everyone useter,
Boost for dear old Ritzville High.
We have the spirit, the true High School
spirit,
And victory won't pass us by,
While we're waving our shakers,
Our red and black shakers,
The shakers of Ritzville High!

THE FOOTBALL SONG

Here's to the Ritzville team,
Hold 'em down, hold 'em down,
Here's to the Ritzville team,
Hold 'em down, hold 'em down,
Here's to the Ritzville team,
They've got fight and they've got steam
And you can't hold 'em down
And you can't—can't—cant!
Balma Guilley—Balma Guilley
Balm, Balm Guilley,
Way down on the Bingo Farm.

Here's to the Ritzville Coach,
He's far beyond reproach.

OH RITZVILLE HIGH MY RITZVILLE HIGH

Oh Ritzville High, my Ritzville High,
The days may come the days may go,
But still to me in memories nigh,
Those dear old days at Ritzville High.

YELLS

GERMAN YELL

Was ist das, Was ist das
Ritzville Hi School, Das ist was.

YEA TEAM

Yea Team! Yea Team! Fight 'Em!
Oh you monkey eye,
Dear old Ritzville High;
And we'll rough house old
'Til they holler Boola Boo.

SPELL IT RITZVILLE

R-i-t-z-v-i-l-l-e, Ritzville!

FIGHT 'EM RITZVILLE

Fight 'em! Ritzville, fight 'em!
Fight 'em! Ritzville, fight 'em!
Fight! Fight! Fight!
Fight 'em! Ritzville, fight 'em!

HALLABO! RAH! RAH!

Hallabo Rah! Rah!
Hallabo Rah! Rah!
Who Rah! Who Rah!
Ritzville! Rah! Rah!

Yells—Continued

LET'S GO RITZVILLE, LET'S GO

Let's go Ritzville, let's go. (Soft.)
Let's go Ritzville, let's go! (Louder.)
Let's go Ritzville, let's go! (Loudest.)

FOUR RAHS FOR TEAM

Team! Rah! Rah! Rah! Rah! Team!

FOOTBALL YELL (On Kickoff)

Sis-s-s---s BOOM! Ah-h-h-h—ah!
RITZVILLE!

RALLY YELL

Leader: Who we gonna play? Students: (Opposing Team.)
Leader: When we gonna play? Students: (Day.)
Leader: What time we gonna play? Students: (Time.)
Leader: Where we gonna play? Students: (Place.)
Leader: Who's gonna win? Students: Ritzville!

CATANA

Catana, catana, ca ta, ca ta,
Cazuk, cazuk, cazak, cazak,
Catana, cata, cazuk, cazuk,
Ritzville High School, rah, rah, rah!

MEMORANDUM

MEMORANDUM

MEMORANDUM